

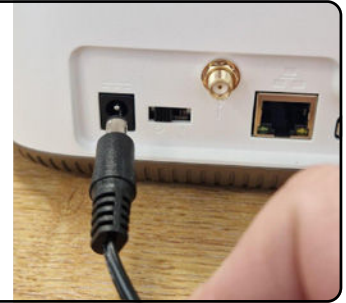
Eliza Personal Alarm Quick Install Guide



Welcome to Careium. To install your new unit, please follow these simple steps:

1 Remove unit and power lead from the packaging.

2 Connect the power lead to the unit.



3 Plug the unit into a mains power socket.



4 Switch the unit on using the switch next to where the power lead connects.



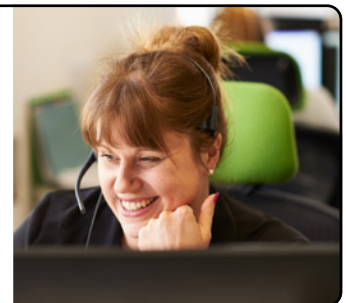
5 The power symbol will light up red. As will the help button in the centre.



6 Wait 5 minutes then test your unit by pressing the pendant that came in the box.



7 The unit should connect to our alarm receiving centre. Please wait for an operator to speak to you over the unit. When they ask if you are OK, please tell them you're just testing.



If you have additional detectors from us, please test each detector individually to ensure they all work correctly. Each one will require a separate test call.

Please remember to test your equipment once a month. Why not do this on the day of the month you were born so it's easy for you to remember?

If you have any issues please contact our customer services team on 0300 333 6511.