

# Smoke Detector i10 Technical Guide



# Welcome to Careium

This step-by-step guide tells you everything you need to know to set up your smoke detector.

## Before installation

**IMPORTANT:** Before installing your equipment, please ensure you have provided us with all the service user details (contact information, medical records, keyholder details, etc). If you have not already done so, you can provide this via either the form on our website, available at [careium.co.uk/service-user-details](https://careium.co.uk/service-user-details) or via the paper forms we previously sent you. Alternatively, please contact our Customer Services team on 0300 333 6511, who can take this information over the telephone.

Please remember to update us with any changes to the information we hold to ensure we have all the correct information when we respond to activations from your equipment.

**If you have any questions or issues, please see our comprehensive FAQs online at [careium.co.uk/contact/faqs](https://careium.co.uk/contact/faqs)**

All illustrations are for illustrative purposes only and may not accurately depict the actual device. The items supplied with your unit might vary depending on the software and accessories available in your region.

# Product Overview

This smoke detector is approved in accordance with EN14604:2005, the latest and most rigorous European standard for smoke detectors. The unique optical detection chamber is particularly sensitive to slow and smoldering fires typically originating from living rooms, bedrooms and hallways where porous materials or textiles are present, while being highly resistant to false alarms. The built-in battery has a guaranteed service life of 10 years.

## Product features

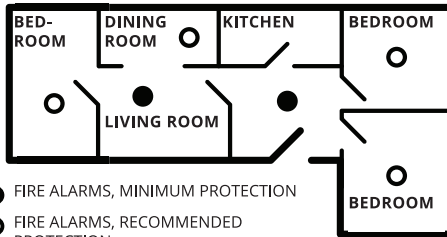
- Sealed built-in 10-year lithium battery.
- Approved according to EN14604: 2005 (smoke detectors)
- Unique X-profile detection chamber with integrated insect screen.
- Software that maximises detection and reduces false alarms.
- Switches on automatically when clicked into place on the radio base.
- Red LED flashes approximately every minute confirming that the unit is powered and ready to detect a fire. (Standby mode)
- If the battery is low or the smoke detector has reached the end of its service life, a beep will be emitted every minute. It is possible to silence the alarm for ten hours by pressing the test button. The smoke detector does not need to be removed from the mounting plate. It can be replaced at your convenience the following day/days.
- Extra-large test button for easy and complete function control.
- Reacts quickly with a strong signal (85dB at 3 meters) that automatically resets when smoke has left the detection chamber.
- Pause function – Silence your alarm briefly, ideal for non-emergency situations when unwanted alarms occur, such as from steam or cigarette smoke. The red LED flashes every 12 seconds to remind you that it has been paused and automatically resets to active mode within 10 minutes.

# Placement

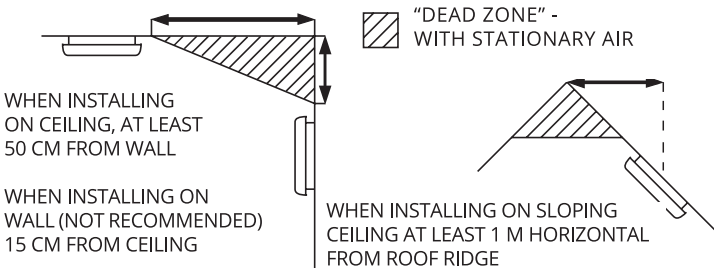
Optical smoke detectors are considered to be most effective in detecting smoldering fires. Fires that can smolder for several hours before developing into open flame fires. Examples of this type of fire could be a cigarette lying on a piece of furniture and smoldering, or an electric cable that is overheated and eventually catches fire. Smoke alarms must not be installed in kitchens or bathrooms, as the risk of unwanted alarms increases, but preferably in a room next to the kitchen, hall or living room.

## Recommended placement of smoke and heat detectors:

SINGLE-STOREY HOUSE WITH TWO BEDROOMS



MULTI-STOREY BUILDING WITH MULTIPLE BEDROOMS



## Where to avoid placement

- 1** Do not place the fire alarm close to fans, as exhaust or supply air devices can blow or suck smoke away from the alarm.
- 2** Do not install in or near areas with high humidity, e.g. showers, bathrooms or kitchens where humidity exceeds 85% or where room temperature exceeds 45° or falls below 0°, as this may cause false alarms and/or damage the device.
- 3** Do not install at the top of a vaulted or sloping ceiling. Stationary air can prevent smoke from reaching the device.
- 4** Do not install less than 50 cm from walls and mounted light fittings where rising heat or stationary air can prevent smoke from reaching the alarm.
- 5** Do not install in areas with high insect activity.
- 6** Do not install in areas with high concentrations of cigarette smoke that may cause false alarms and over time the device may become contaminated.
- 7** Do not install fire alarms in kitchens, boiler rooms and garages where smoke and dust can cause false alarms.
- 8** Do not install on poorly insulated walls and ceilings where cold air boundary layers can prevent smoke from reaching the fire alarm.
- 9** Do not install near objects that can prevent smoke from reaching the alarm e.g. high bookshelves.
- 10** Do not install closer than 150 cm from fluorescent tubes that can trigger interfering false alarms when they are switched on and off.
- 11** Do not cover or paint the alarm.

## Additional placement information

- 1** At least one fire alarm must be installed along escape routes from all floors of the building.
- 2** The detection chamber of a smoke detector must be fitted between 2.5 cm and 30 cm below the ceiling.
- 3** Fire alarms must be installed at least 50 cm from walls or light fittings.
- 4** If ceiling mounting is impractical, fire alarms may be installed on walls provided that the area is no longer or wider than 10 m and the total area does not exceed 50 m<sup>2</sup> and that:
  - The smoke chamber is between 15–30 cm below the ceiling.
  - The bottom of the fire alarm is above ventilation openings, doors and openable windows.
  - They are not mounted near or over heating systems or air conditioning exhausts.
- 5** If fire alarms are located in a hallway, corridor or entrance, the devices must not be more than three metres from any bedroom door to improve audibility through closed doors.
- 6** In large areas, a fire alarm should be no longer than 7.5 metres away from any point in the ceiling of any room, hall or corridor.
- 7** In order to provide as early a warning as possible, fire alarms should be installed in all rooms of your home and interconnected where possible. (Except for the areas indicated on page 4 under the heading “Where to avoid placement”).

# Assembly / Installation

Do not store devices at temperatures below 0°C and above 45°C as this may cause unwanted alarms and disturbances after initial installation. However, these will stop after a short time when the device has become acclimatised to the new temperature. Prolonged periods under these conditions will reduce the lifetime of the device and may void the warranty.

Separate the device from the mounting plate. The smoke detector is supplied switched off with the radio base not attached.

If the device has been activated before installation, press the small locking wedge located on the side and turn the alarm counterclockwise while holding the radio base. Then remove the smoke detector.

Decide where to install the device. See previous section. Always ensure that surfaces do not contain hazardous materials, e.g. asbestos, water or electrical wires before drilling. The enclosed screws are suitable for use in wood, and screws and plugs are used for plasterboard and concrete. For some installations, the installer may need to use another solution such as double-sided tape or adhesive to avoid drilling. If mounting adhesive is used, consider the drying time before actually fitting the smoke detector.

If you use double-sided tape or adhesive, make sure that the surfaces are clean, dry, flat and have good adhesion. Always take appropriate safety precautions when attaching the mounting plate to the ceiling. Wear protective equipment, e.g. protective goggles and a face mask when drilling.

## Installing the device

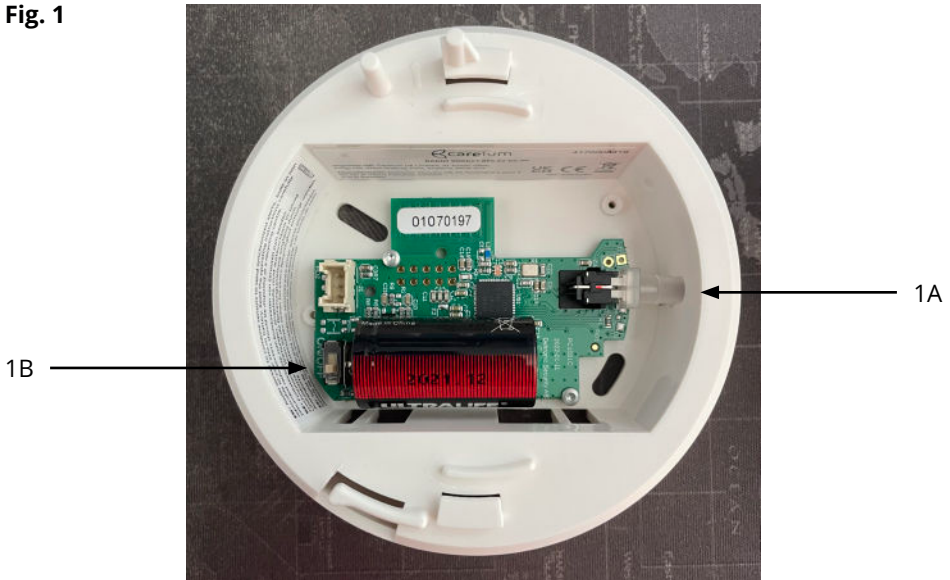
- 1 Fix the base unit to the ceiling using your preferred solution.
- 2 Activate the radio card in the base unit: press and hold the push button on the radio card, see Fig. 1 A. Turn on the radio card with the power switch, see Fig. 1 B. The push button (1 A) now flashes quickly. Release the button. Press the button again. The button will light up for a while and then go out. The radio card is now activated as a single unit. Connect the cable.
- 3 Align the arrow on the back of the fire alarm with the arrow inside the mounting plate, when the fire alarm is aligned correctly on the mounting plate, turn clockwise until the locking wedge clicks into place. The built-in battery will now automatically activate and the fire alarm will start up with an internal silent test.
- 4 Activate the radio learning mode in the personal alarm unit/system.
- 5 Press the test button once to send a radio message that can be used to pair the smoke detector with the personal alarm phone.
- 6 Confirm the setting on the receiver unit.
- 7 Configure the desired alarm type on the receiving unit.
- 8 Test the entire alarm chain by pressing the test button three times within two minutes to send an alarm and wait for the operator to respond to the alarm. See Fig 2. Remember to alert the alarm receiver.



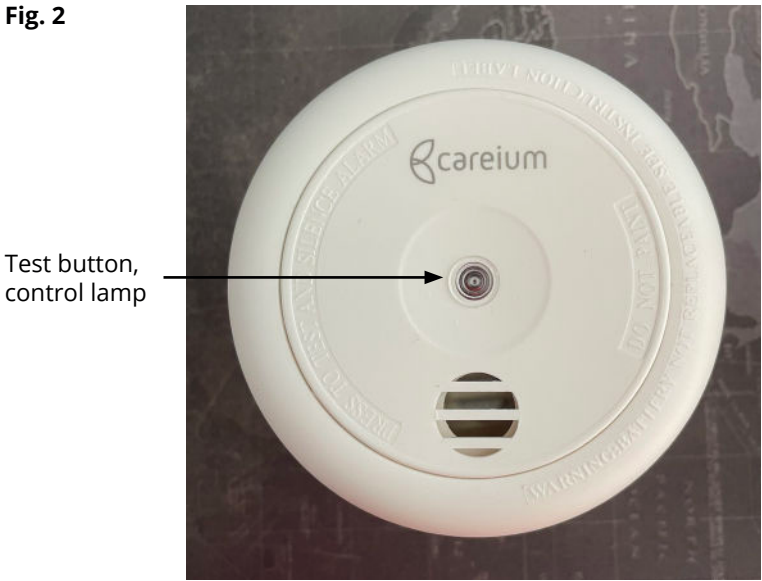
**NOTE:** If multiple Detectors, Smoke, Heat or CO are to be installed please contact Careium for installation quotes



**Fig. 1**



**Fig. 2**



## Alarms from serial-connected device

If there is an alarm from one device, the others will first emit a pre-alarm. The pre-alarm consists of three beeps and then the number of clicks for the unit device of the alarm activated. (Example: beep beep, click, click, "Device no. 2 has activated"). The device will emit a warning sound as for a normal alarm and the entire sequence will be repeated.

If the alarm is to be regarded as a false alarm, silence the device by pressing the device test button/Silence button once. This will silence the linked alarm and other paired devices will go silent.

A secondary alarm (the one that did not initiate the alarm) cannot be silenced by pressing the device test button but can only be silenced locally by pressing once on the radio card push button.

If you press on an alarm that has not triggered a warning, a normal test of the device takes place.



**NOTE:** If multiple Detectors, Smoke, Heat or CO are to be installed please contact Careium for installation quotes

# Alarm test

Testing of alarms can be done either separately for each smoke detector, testing the entire alarm chain for individual devices and testing the entire alarm chain for serial-connected devices. Testing of alarms and the alarm chain needs to be carried out every six months, so warn anyone who might be affected in advance.



**WARNING:** Wear ear protection when testing the alarm as it is very loud (85 dB at 3 m)

## Smoke detector test

Press and release the test button, (see Fig. 2) to test the function. The fire alarm should sound three times with a flashing red light and then stop. After the test, check that the red light flashes approximately every minute. N.B. Pressing the test button only tests the actual fire alarm, not radio functions.



**WARNING:** The test button provides a complete test of the actual fire alarm. Do not attempt to test the alarm using either heat, smoke or an open flame, as this may damage the unit or the surrounding environment.

## Test of alarm chain for individual smoke detectors

Test the entire alarm chain by pressing the test button (see Fig. 2) three times within two minutes to send an alarm, wait for the operator to respond to the alarm.

## Test of alarm chain for multiple smoke detectors

Testing of the alarm chain from one alarm to one or more others can be done by pressing 5 times on the smoke detector's test button (see Fig. 2). Between each press, wait until the beep sounds 3 times and all presses are done within 2 minutes. This initiates an alarm as described on page 9 under "Alarms from serial-connected device", wait for the operator to respond to the alarm.

# User information

Protect your home from fire and visit the emergency services website to find help in designing your fire protection. Their information is free and identifies potential fire hazards in and around your home. Also make sure that everyone in the building knows what a smoke detector sounds like!

## Control lamp/signal

	Control lamp	Signal
Normal operations	1 flash / min	Silent
In case of alarm	Continuous flashing	Pulsating sound
Battery warning	1 flash / min	One short click once a minute
Test button stuck		One click every 11 seconds
Device error		Double click every minute

## What to do if the alarm sounds

- Make sure everyone leaves the building as soon as possible.
- Check that nobody is left behind!
- Do not run and leave personal belongings behind.
- If safe to do so, close all windows and doors when evacuating the premises/area to prevent fire from spreading.
- Call the emergency services if necessary.
- Smoke is the main cause of death from fire, so if you are trapped inside a building, cover your mouth, hold your breath and crawl close to the floor until you reach safety. Do not stand up more than necessary!
- If possible, try to limit/extinguish the fire.
- Do not reset a smoke detector until you know the cause of the alarm and when all personnel are safe!

## Preventive measures

- Draw up an evacuation plan with an assembly point away from the building / property.
- Practice how to act in a live situation.
- If there is firefighting equipment, where is it and who can use it?
- Who does what? Is it possible to allocate different areas of responsibility? Upper floors, lower floors, etc.
- Do not leave candles unattended, and handle recently burnt ashes with care.
- Regularly carry out a health check of electrical appliances and installations.
- Keep matches/lighters out of reach of children.
- Do not store flammable or explosive liquids near heat sources.
- Be careful with flammable textiles/curtains near windows/tables with candles.
- It is a good idea to supplement your fire protection with a fire blanket or a fire extinguisher.

# Maintenance manual

A regular fire alarm maintenance program will help keep your alarm in good working order.

- Vacuum the alarm every six months and wipe with a damp cloth to prevent the sensors from clogging.
- Do not paint the alarm.
- Cover the fire detector when performing dusty work, such as sanding floors or walls.
- A smoke detector is a sensitive life-saving device. The lifetime of the alarm can be significantly reduced by not regularly cleaning and maintaining it according to the instructions. Lack of reasonable care may also cause malfunction and may void the warranty.

# General information

The internal battery lasts for 10 years and cannot be replaced. At the end of its operating period, the device beeps once per minute for at least one month to indicate that it is time to replace the smoke detector. The life of the battery can be significantly reduced by incorrect storage and/or use, e.g. at temperatures below 0°C or above 45°C. The service life can also be shortened by repeated or prolonged periods in full alarm, often caused by the presence of cigarette smoke, steam, aerosol spray or condensation. In such circumstances, the warranty does not apply. If a low battery warning occurs at night, press the test button to pause the battery warning for 10 hours. Replace the alarm as soon as possible, preferably within the next few days if possible.

Check that the alarm has been installed according to the instructions. In the event of repeated false alarms, check that the unit is free from dust, spider webs and is not affected by external contamination from e.g. cigarette smoke or spray from household aerosols and steam, as this will in the long term shorten the service life of the smoke detector. If this does not solve the problem, DO NOT attempt to repair the device yourself. There are no easy to service parts inside the device.

# Technical data

The product is intended for indoor use in a normal residential environment.

<b>CAREIUM SMOKE DETECTOR i10</b>	
<b>Temperature</b>	Temperature range +5°C to +35°C
<b>Humidity</b>	0–75% relative humidity (non-condensing)
<b>Emissions class</b>	1
<b>Detector type</b>	Optical
<b>Dimensions</b>	Dia. 91 x 58 mm
<b>Power supply</b>	Lithium battery, not replaceable
<b>Battery life</b>	10 years
<b>Radio frequency</b>	869.2125 MHz, 868.1 MHz
<b>Radio max output</b>	10 mW (10 dBm)
<b>Equipment class</b>	Class 1 radio equipment

## Approval



-marked. Complies with relevant standards.



# Other information

## EU declaration of conformity

Deltronic hereby declares that this radio equipment is in compliance with Directives 2014/53/EU and 2011/65/EU. The full text of the EU declaration of conformity is available at the following internet address: [www.deltronic.com/careium](http://www.deltronic.com/careium).

## Environment information

This product complies with the EU directives 2012/19/EU (WEEE) and 2006/66/EC (batteries). These directives regulate product liability for the recycling of electrical and electronic equipment and batteries in order to increase recycling and minimise waste. This device is marked with the crossed-out wheeled bin symbol, which means it should be recycled. This means that the product can be returned to an appropriate municipal recycling centre, to Careium or to the retailer. Detailed instructions are available from your retailer or on our website [www.careium.com](http://www.careium.com).



**NOTE:** The WEEE information and recycling instructions apply only to EU member states. For other countries, please check your local legislation or contact your dealer. Manufactured according to EU Directive 2011/65/EU (RoHS2).

## Legal information

The information contained herein is subject to change without notice. The only warranties applicable to Careium products and services are set forth in the warranty terms accompanying these products and services. Nothing herein should be construed as constituting any additional warranty. Careium accepts no liability for technical errors or errors or omissions in this document.

# Notes

A series of horizontal dotted lines for writing notes.

# Notes

A series of horizontal dotted lines for writing notes.

OCTOBER 2023

Careium  
Aspinall House,  
Walker Office Park,  
Blackburn,  
Lancashire,  
BB1 2QE

Call: 0300 333 6511  
Visit: [www.careium.co.uk](http://www.careium.co.uk)  
Email: [uk.info@careium.com](mailto:uk.info@careium.com)

